

# Companion Workbook for Human Histology

Second Edition

## Highlights of the workbook

- Covers all topics as per the latest **CBME curriculum**.
- Useful in **practical histology** laboratory
- **93 hand-drawn** easy to draw figures (H&E pencil drawings) for written assessments.
- Salient features of each structure in 3 to 4 lines
  - For **rapid revision** of the subject
  - For **identification** of histological structures
  - Helpful for **practical examinations**
  - Helpful in **summarizing the facts** in written assessments.

### Ujwala Bhanarkar MBBS, MD (Anatomy)

is currently Assistant Professor, Department of Anatomy, All India Institute of Medical Sciences (AIIMS), Kalyani, West Bengal. She is known for her passionate teaching and dedication to the field. She is author of *Multiple Choice Questions and Viva Voce in Human Embryology*, and *Multiple Choice Questions and Viva Voce in Human Histology*. She has created well admired Digital Anatomy content.

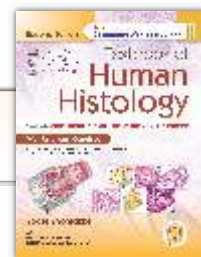


### Yogesh Sontakke MBBS, MD (Anatomy)

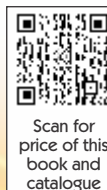
is currently Additional Professor, Department of Anatomy, Jawaharlal Institute of Postgraduate Medical Education & Research (JIPMER), Puducherry, an Institution of National Importance under the Ministry of Health & Family Welfare, Government of India. He is a compassionate teacher and admired by the students for chalk-n-board teaching. His constant perseverance, dedication and passion towards the field of teaching is reflected in his well-read books: *Textbook of Human Embryology 2/e*, *Textbook of Human Histology 2/e*, *Textbook of Human Anatomy Vols 1 to 6*, *Principles of Clinical Genetics*, *Principles of Histological Techniques*, *Immunohistochemistry and Microscopy*, and *Principles of Scientific Writing*.



This Logbook is free with  
Yogesh Sontakke's *Textbook of Human Histology, 2/e*

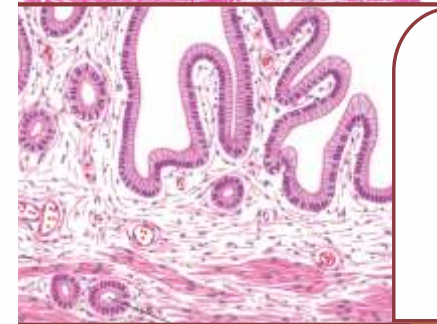
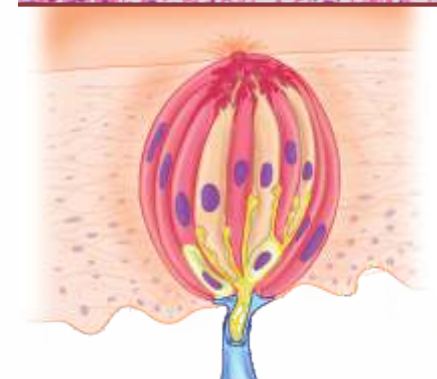
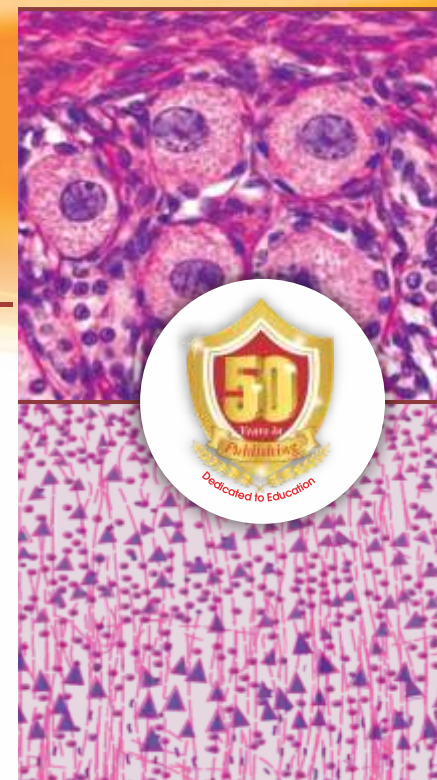


Dedicated to Education  
**CBSPD**  
CBS Publishers & Distributors Pvt Ltd  
4819/XI, Prahlad Street, 24 Ansari Road, Daryaganj, New Delhi 110 002, India  
E-mail: delhi@cbspd.com, customercare@cbspd.com; Website: www.cbspd.com  
New Delhi | Bengaluru | Chennai | Kochi | Kolkata | Lucknow | Mumbai  
Hyderabad | Jharkhand | Nagpur | Patna | Pune | Uttarakhand



Scan for  
price of this  
book and  
catalogue

ISBN:978-93-5466-634-6



Free  
access to  
digital content  
**Learn Histology**

Second Edition

# Companion Workbook for Human Histology

As per the latest CBME Guidelines | Competency Based  
Undergraduate Curriculum for the Indian Medical Graduate

Name: \_\_\_\_\_

Course: \_\_\_\_\_ Year: \_\_\_\_\_

Batch: \_\_\_\_\_ Roll number: \_\_\_\_\_

Name of the institute: \_\_\_\_\_

\_\_\_\_\_

**Ujwala Bhanarkar**  
**Yogesh Sontakke**



CBSPD Dedicated to Education

CBS Publishers & Distributors Pvt Ltd



**Disclaimer**  
Science and technology are constantly changing fields. New research and experience broaden the scope of information and knowledge. The authors have tried their best in giving information available to them while preparing the material for this book. Although all efforts have been made to ensure optimum accuracy of the material, yet it is quite possible some errors might have been left uncorrected. The publisher, the printer and the authors will not be held responsible for any inadvertent errors or inaccuracies.

**Second Edition**  
Companion Workbook for  
**Human Histology**

**ISBN:** 978-93-5466-634-6  
Copyright © Authors and Publisher  
Illustrations: © Yogesh Sontakke

**Second Edition: 2024**

All rights reserved. No part of this book may be reproduced or transmitted in any form or by any means, electronic or mechanical, including photocopying, recording, or any information storage and retrieval system without permission, in written, from the author and the publisher.

Published by [Satish Kumar Jain](#) and produced by [Varun Jain](#) for  
**CBS Publishers & Distributors Pvt Ltd**  
4819/XI Prahlad Street, 24 Ansari Road, Daryaganj, New Delhi 110 002, India  
Ph: 011-23289259, 23266861 Website: [www.cbspd.com](http://www.cbspd.com)  
e-mail: [delhi@cbspd.com](mailto:delhi@cbspd.com)  
*Corporate Office:* 204 FIE, Industrial Area, Patparganj, Delhi 110 092, India  
Ph: 0114934 4934 Fax: 011-4934 4935 e-mail: [publishing@cbspd.com](mailto:publishing@cbspd.com); [publicity@cbspd.com](mailto:publicity@cbspd.com)

**Branches**

- **Bengaluru:** Seema House 2975, 17th Cross, K.R. Road, Banasankari 2nd Stage, Bengaluru 560 070, Karnataka, India  
Ph: +91-80-26771678/79 Fax: +91-80-26771680 e-mail: [bangalore@cbspd.com](mailto:bangalore@cbspd.com)
- **Chennai:** 7, Subbaraya Street, Shenoy Nagar, Chennai 600 030, Tamil Nadu, India  
Ph: +91-44-26680620, 26681266 Fax: +91-44-42032115 e-mail: [chennai@cbspd.com](mailto:chennai@cbspd.com)
- **Kochi:** 42/1325, 1326, Power House Road, Opp KSEB, Power House, Ernakulam, Kochi, 682 018, Kerala, India  
Ph: +91-484-4059061-65,67 Fax: +91-484-4059065 e-mail: [kochi@cbspd.com](mailto:kochi@cbspd.com)
- **Kolkata:** 147, Hind Ceramics Compound, 1st Floor, Nilgunj Road, Belghoria, Kolkata 700 056, West Bengal, India  
Ph: +91-33-25633055/56 e-mail: [kolkata@cbspd.com](mailto:kolkata@cbspd.com)
- **Lucknow:** Basement, Khushnuma Complex, 7-Meerabai Marg (behind Jawahar Bhawan), Lucknow 226 001, UP, India  
Ph: +91-522-4000032 e-mail: [tiwari.lucknow@cbspd.com](mailto:tiwari.lucknow@cbspd.com)
- **Mumbai:** PWD Shed, Gala no. 25/26, Ramchandra Bhatt Marg, Next to JJ Hospital Gate no. 2, Opp. Union Bank of India, Noorbaug, Mumbai 400 009, Maharashtra, India  
Ph: +91-22-66661880/89 e-mail: [mumbai@cbspd.com](mailto:mumbai@cbspd.com)

**Representatives**

• <b>Hyderabad</b> 0-9885175004	• <b>Jharkhand</b> 0-9811541605	• <b>Nagpur</b> 0-8692091830
• <b>Patna</b> 0-9334159340	• <b>Pune</b> 0-9664372571	• <b>Uttarakhand</b> 0-9716462459

Printed at: Magic International Pvt. Ltd. Greater Noida, UP, India



Scan QR code to install CBSiCentral app or Search on Google Play Store

**Study Material available free on App**

Please visit our CBSiCentral App for access to study material

Scratch code

(Access valid for one year only from the date of activation)

**Second Edition**

# Companion Workbook for **Human Histology**

**As per the latest CBME Guidelines | Competency Based  
Undergraduate Curriculum for the Indian Medical Graduate**

**Ujwala Bhanarkar** MBBS MD

Assistant Professor  
Department of Anatomy  
All India Institute of Medical Sciences (AIIMS)  
Kalyani, Kolkata, West Bengal, India

**Yogesh Ashok Sontakke** MBBS MD

Additional Professor  
Department of Anatomy  
Jawaharlal Institute of Postgraduate Medical Education and Research (JIPMER)  
(An Institute of National Importance under the Ministry of Health and Family Welfare, Government of India)  
Puducherry, India



**CBS Publishers & Distributors Pvt Ltd**

New Delhi • Bengaluru • Chennai • Kochi • Kolkata • Lucknow • Mumbai  
Hyderabad • Jharkhand • Nagpur • Patna • Pune • Uttarakhand

# Contents

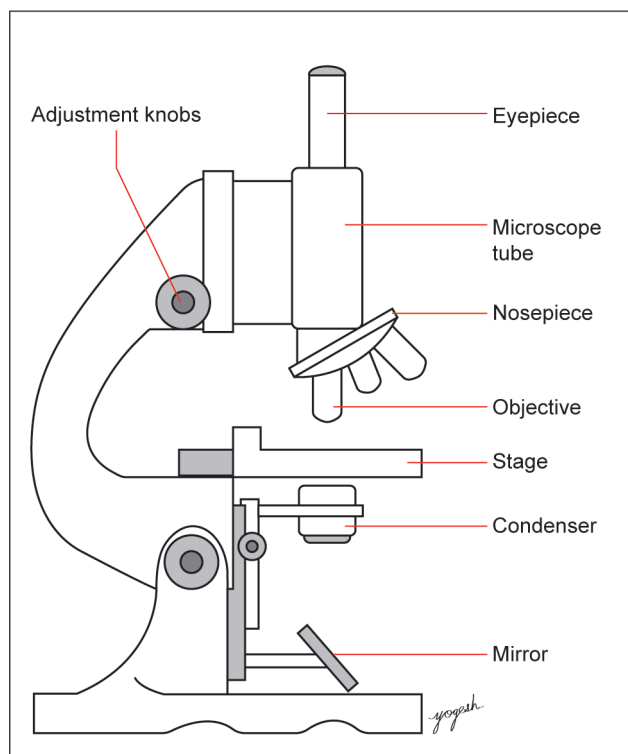
Plate 1:	Parts of Microscope	3	Plate 47:	Lip	24
Plate 2:	Hematoxylin and Eosin Pencils	3	Plate 48:	Tooth	24
Plate 3:	Structures Stained by Hematoxylin and Eosin	3	Plate 49:	Tongue: Anterior Two-thirds	25
Plate 4:	Cell and Cell Organelles	4	Plate 50:	Types of Papillae	25
Plate 5:	Microvilli, Stereocilia and Cilia	4	Plate 51:	Tongue: Posterior One-third	26
Plate 6:	Simple Epithelium	4	Plate 52:	Esophagus (Lower Part)	26
Plate 7:	Pseudostratified Columnar Epithelium	4	Plate 53:	Gastro-esophageal Junction	27
Plate 8:	Non-keratinized Stratified Squamous	5	Plate 54:	Stomach: Fundus and Body	27
Plate 9:	Keratinized Stratified Squamous	5	Plate 55:	Stomach: Pylorus	28
Plate 10:	Transitional Epithelium	5	Plate 56:	Duodenum	28
Plate 11:	Serous Salivary Gland	6	Plate 57:	Jejunum	29
Plate 12:	Predominantly Mucous Salivary Gland	6	Plate 58:	Ileum	29
Plate 13:	Mixed Salivary Gland	7	Plate 59:	Large Intestine	30
Plate 14:	Types of Connective Tissue Fibers	7	Plate 60:	Appendix	30
Plate 15:	Loose Connective (Areolar) Tissue	8	Plate 61:	Liver	31
Plate 16:	Dens Regular Connective Tissue (Tendon)	8	Plate 62:	Gallbladder	31
Plate 17:	Yellow Adipose Tissue	9	Plate 63:	Pancreas	32
Plate 18:	Hyaline Cartilage	9	Plate 64:	Kidney	32
Plate 19:	Elastic Cartilage	10	Plate 65:	Ureter	33
Plate 20:	White Fibrocartilage	10	Plate 66:	Urinary Bladder	33
Plate 21:	Transverse Section (TS) of Dry, Compact Bone	11	Plate 67:	Testis	34
Plate 22:	Longitudinal Section (LS) of Dry, Compact Bone	11	Plate 68:	Epididymis	34
Plate 23:	Cancellous (Trabecular or Spongy) Bone	12	Plate 69:	Ductus Deferens/Vas Deferens	35
Plate 24:	Developing Bone	12	Plate 70:	Seminal Vesicle	35
Plate 25:	Skeletal Muscle	13	Plate 71:	Prostate	36
Plate 26:	Cardiac Muscle	13	Plate 72:	Penis	36
Plate 27:	Smooth Muscles	14	Plate 73:	Ovary	37
Plate 28:	Lymph Node	14	Plate 74:	Uterus: Proliferative Phase	37
Plate 29:	Spleen	15	Plate 75:	Uterus: Secretory Phase	38
Plate 30:	Palatine Tonsil	15	Plate 76:	Cervix of Uterus	38
Plate 31:	Thymus	16	Plate 77:	Fallopian Tube	39
Plate 32:	Peripheral Nerve—Transverse Section	16	Plate 78:	Mammary Gland: Inactive Stage	39
Plate 33:	Peripheral Myelinated Nerve—Osmic Acid Staining	17	Plate 79:	Mammary Gland: In Lactation	40
Plate 34:	Dorsal Root or Spinal Ganglion	17	Plate 80:	Placenta	40
Plate 35:	Autonomic or Sympathetic Ganglion	18	Plate 81:	Umbilical Cord	41
Plate 36:	Large or Elastic Artery	18	Plate 82:	Pituitary Gland	41
Plate 37:	Medium-sized or Muscular Artery	19	Plate 83:	Suprarenal/Adrenal Gland	42
Plate 38:	Arteriole and Venule	19	Plate 84:	Thyroid Gland	42
Plate 39:	Types of Capillaries	20	Plate 85:	Parathyroid Gland	43
Plate 40:	Medium-sized Vein	20	Plate 86:	Cerebrum	43
Plate 41:	Large Vein	21	Plate 87:	Cerebellum	44
Plate 42:	Thin Skin	21	Plate 88:	Spinal Cord (H&E Staining)	44
Plate 43:	Thick Skin	22	Plate 89:	Spinal Cord at Different Levels	45
Plate 44:	Epiglottis	22	Plate 90:	Cornea	45
Plate 45:	Trachea	23	Plate 91:	Retina	46
Plate 46:	Lung	23	Plate 92:	Optic Nerve—Transverse Section	46
			Plate 93:	Cochlea	47

In the practical histology laboratory, learning to identify histological structures is an expected learning outcome. The identification of the histological structure should be supported with specific points. As per the latest CBME curriculum and GMER-2019, a separate weightage is given to the logbooks. This practical companion book is prepared with the intention of providing a guide to students to draw easy and beautiful diagrams in their logbooks. It will also help in preparation for Histology practical examination and viva.

**Ujwala Bhanarkar**  
**Yogesh Ashok Sontakke**

## HISTOLOGY DIAGRAMS

Plate 1: **Parts of Microscope**



Note: Draw this figure using Hb pencil.

Plate 2: **Hematoxylin and Eosin Pencils**

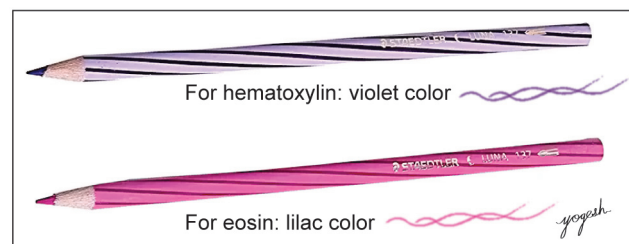
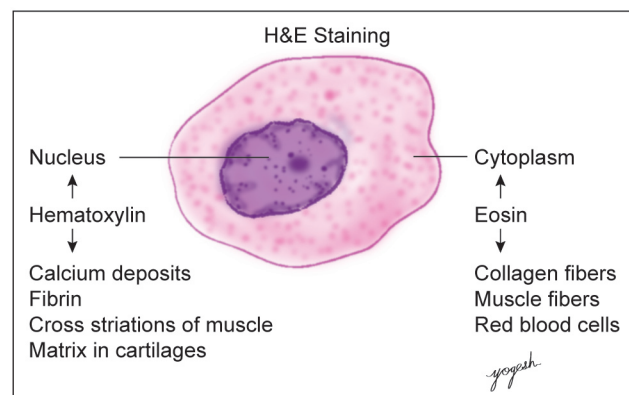


Plate 3: **Structures Stained by Hematoxylin and Eosin**



- For drawing diagrams, always use special violet and lilac color professional pencils for drawing hematoxylin and eosin-stained structures (Apsara, Faber-Castell, Staedtler or any other suitable brand). Do not use routine pink and violet color pencils. Use HB pencil or black pen for labeling.
- Hematoxylin stains nuclei, calcium deposits, fibrin, cross striations of muscle, matrix in cartilages, and so on. Eosin is an acidic type that stains basic or eosinophilic compounds such as cytoplasm, connective tissue (collagen fibers), muscle fibers, red blood cells, and so on.

Space for Notes \_\_\_\_\_