

Fifth Edition

# Handbook of Pathology for Postgraduate Students

is a ready to use, concise compilation of important topics for postgraduate students in pathology. It is a collection of topics from the very successful SPARRC programme (Sri Ramachandra Pathology Annual Rapid Review Course) being conducted for the eleventh consecutive year. It includes key points in histopathology of major lesions from each system and other fundamental topics of practical importance such as autopsy, special stains and immunohistochemistry.

Various topics in hematology, cytology and transfusion medicine have also been discussed. Some practical aspects of quality control and automation have been presented. A list of must know learning points has been summarized under the heading Pearls in Pathology. Current topics of interest pertaining to molecular diagnosis, flow cytometry, and FISH is an important feature of this book. On popular demand FAQs in Histotechniques, Current Updates in Pathology and Potpourri of Gross Cases and Approach to Gross Differential Diagnosis were added in third and fourth editions. The fifth edition has improvised on the existing chapters and updated the current criteria. A new feature of the book is grossing protocols with classic gross pictures of lesions. In addition, a ready reckoner of current updated WHO classification of tumors is presented.

This *Handbook* will be a valuable quick reference for all the postgraduate students in pathology and a friendly guide to the young faculty who wish to refurbish their knowledge in pathology.

**Sandhya Sundaram** MD, DNB, FICP, MNAMS, PhD (IIT-Madras) is currently Professor and Head, Department of Pathology, Sri Ramachandra Medical College and Research Institute (SRMC&RI), Sri Ramachandra Institute of Higher Education and Research (Deemed to be University), Chennai, Tamil Nadu. She has more than 24 years of experience in undergraduate and postgraduate teaching and as a senior consultant pathologist. She has also written several chapters, including a chapter titled "Pathology for the Surgeon" in *Short Cases in Surgery*, 2nd edn (CBSPD, 2012) and has the honor of writing the Foreword for the first South Asia edition of *Rosai and Ackerman's Surgical Pathology*, one of the most iconic textbooks in pathology. She has to her credit more than 85 publications in national and high impact international journals and has received several research grants from government funding bodies. She is the current President of Tamil Nadu and Pondicherry Chapter of Indian Association of Pathologists and Microbiologists and founder-President of Society of Genitourinary Pathologists of India.

She is ably supported by Associate Editor, **V Pavithra** MD, Associate Professor of Pathology, who has been coordinating the compilation of this book since its inception and is deeply committed to the improvement of the book year after year. In addition, all the topics have been contributed and updated by faculty members of Department of Pathology, SRMC& RI, and invited experts.



**CBS Publishers & Distributors Pvt Ltd**

4819/XI, Prahlad Street, 24 Ansari Road, Daryaganj, New Delhi 110 002, India  
E-mail: delhi@cbspd.com, customercare@cbspd.com; Website: www.cbspd.com  
New Delhi | Bengaluru | Chennai | Kochi | Kolkata | Lucknow | Mumbai  
Hyderabad | Jharkhand | Nagpur | Patna | Pune | Uttarakhand



Scan for price of this book and catalogue

ISBN: 978-93-5466-687-2



Fifth Edition

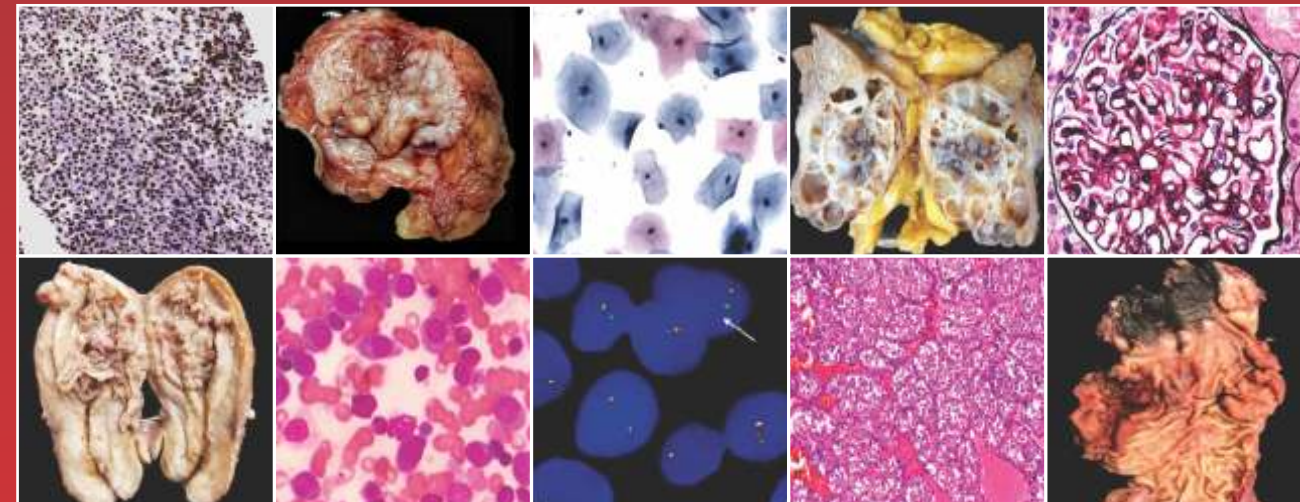
# Handbook of Pathology for Postgraduate Students

Sundaram



Fifth Edition

# Handbook of Pathology for Postgraduate Students



Chief Editor

**Sandhya Sundaram**

Sri Ramachandra Medical College and Research Institute



Dedicated to Education

CBS Publishers & Distributors Pvt Ltd



# Contents

---

<i>Contributors</i>	<i>v</i>
<i>Foreword by Dr PV Vijayaraghavan</i>	<i>vii</i>
<i>Preface to the Fifth Edition</i>	<i>ix</i>
<i>Preface to the First Edition</i>	<i>xi</i>
<b>1. Lesions of the Head and Neck</b>	<b>1</b>
<b>2. Oral Lesions</b>	<b>19</b>
<b>3. CNS Lesions</b>	<b>24</b>
<b>4. Ophthalmic Lesions</b>	<b>41</b>
<b>5. Spectrum of Breast Lesions</b>	<b>48</b>
<b>6. Lesions of the Lung</b>	<b>73</b>
<b>7. Approach to Gastrointestinal Biopsies</b>	<b>93</b>
<b>8. Case Files of GIT Lesions</b>	<b>99</b>
<b>9. Histological Approach to Hepatobiliary Lesions</b>	<b>115</b>
<b>10. Patterns in Pancreatic and Gallbladder Lesions</b>	<b>131</b>
<b>11. Medical Renal Disease</b>	<b>142</b>
<b>12. Pathologic Lesions of Kidneys, Urethra and Urinary Bladder</b>	<b>155</b>
<b>13. Male Genital Tract Lesions Including Prostate</b>	<b>177</b>
<b>14. Diseases of the Female Genital Tract</b>	<b>187</b>
<b>15. Soft Tissue Tumors and Tumor-like Lesions</b>	<b>210</b>
<b>16. Lesions of the Bone and Joints</b>	<b>226</b>
<b>17. Skin Lesions</b>	<b>242</b>
<b>18. Non-Neoplastic Lesions of the Lymph Node</b>	<b>260</b>
<b>19. Diagnostic Approach to Lymphoma</b>	<b>269</b>
<b>20. Endocrine Pathology</b>	<b>283</b>
<b>21. Pap Smear—Gynecological Cytology</b>	<b>299</b>
<b>22. A. Cytology Slide Case Discussion: Part I</b>	<b>313</b>
<b>    B. Cytology Slide Case Discussion: Part II</b>	<b>339</b>
<b>23. Hematology</b>	<b>354</b>
<b>24. Approach to Bleeding Disorders</b>	<b>378</b>
<b>25. Automation in Hematology/Clinical Pathology</b>	<b>383</b>
<b>26. Component Preparation and Therapy</b>	<b>388</b>
<b>27. Blood Bank—Laboratory Procedures</b>	<b>392</b>
<b>28. Immunohistochemistry</b>	<b>395</b>

29. Autopsy Highlights	413
30. Important Histochemical Stains	429
31. Flow Cytometry	439
32. Karyotyping—Basic Essentials	448
33. Fluorescence <i>in situ</i> Hybridization (FISH)	452
34. Molecular Pathology: Basics	458
35. Cell Culture and Tissue Banking Techniques	471
36. Quality Control in Histopathology	475
37. Quality Control in Hematology/Clinical Pathology	481
38. Pearls in Pathology	484
39. Criteria Revisited	493
40. Pedagogy in Points	506
41. Current Updates in Pathology	511
42. FAQs in Histotechniques	536
<i>Potpourri of Gross Cases and Approach to Gross Differential Diagnosis</i>	550
<i>WHO Classification of Tumors</i>	595
<i>General Tips for the Examination Going Postgraduate Students</i>	645
<i>Glossary</i>	649
<i>Bibliography</i>	655